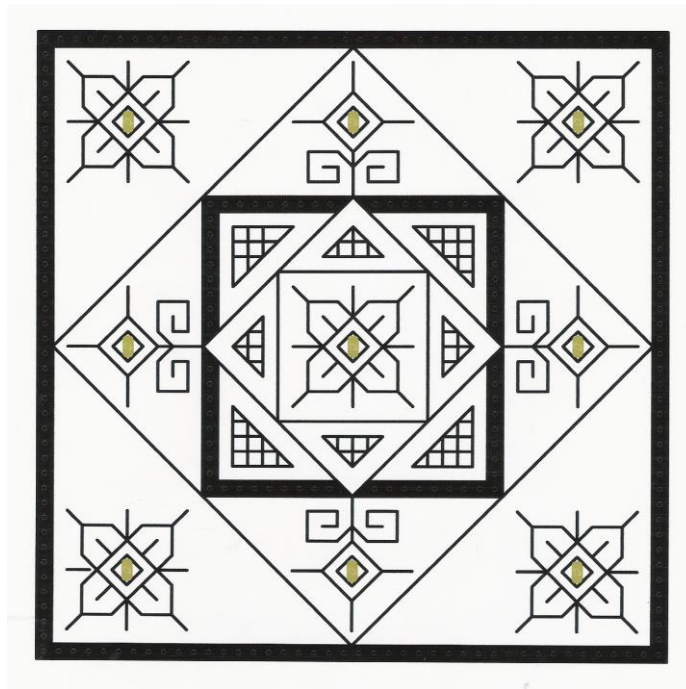
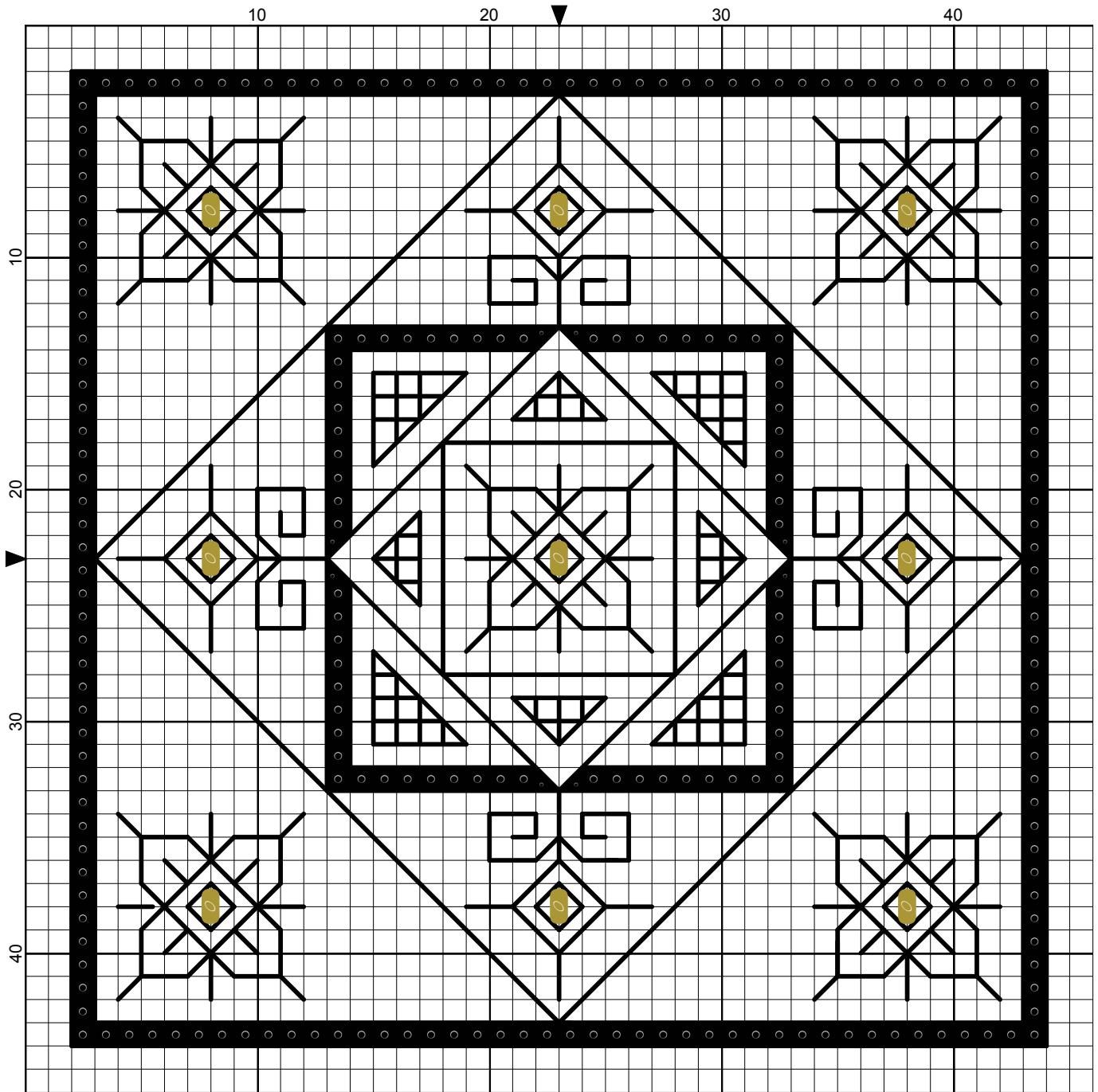


SIMPLE SQUARE

DESIGNS BY ELIZABETH ALMOND



Simple Square




Elizabeth Almond

Simple Square

Author: Elizabeth Almond
Copyright: Elizabeth Almond
Grid Size: 46W x 46H
Design Area: 3.00" x 3.00" (42 x 42 stitches)

Legend:

 [2] DMC-310 ANC-403 black

Backstitch Lines:

 DMC-310 black

Beads:

 MHG-2011 Mill Hill Glass Beads-Victorian Gold

Simple Square - an introduction to blackwork.

14 count aida 7" x 7"

Materials:

DMC stranded cotton 310 Black, one skein
Tapestry needle No 24
Beading needle
Mill Hill Glass beads 2011 Victorian Gold

Stitches used:

Back stitch
Cross stitch

Method:

Work from the centre of the design. All back stitch is worked in one strand. Cross stitch is worked in two strands.
Add the beads after the embroidery has been completed.