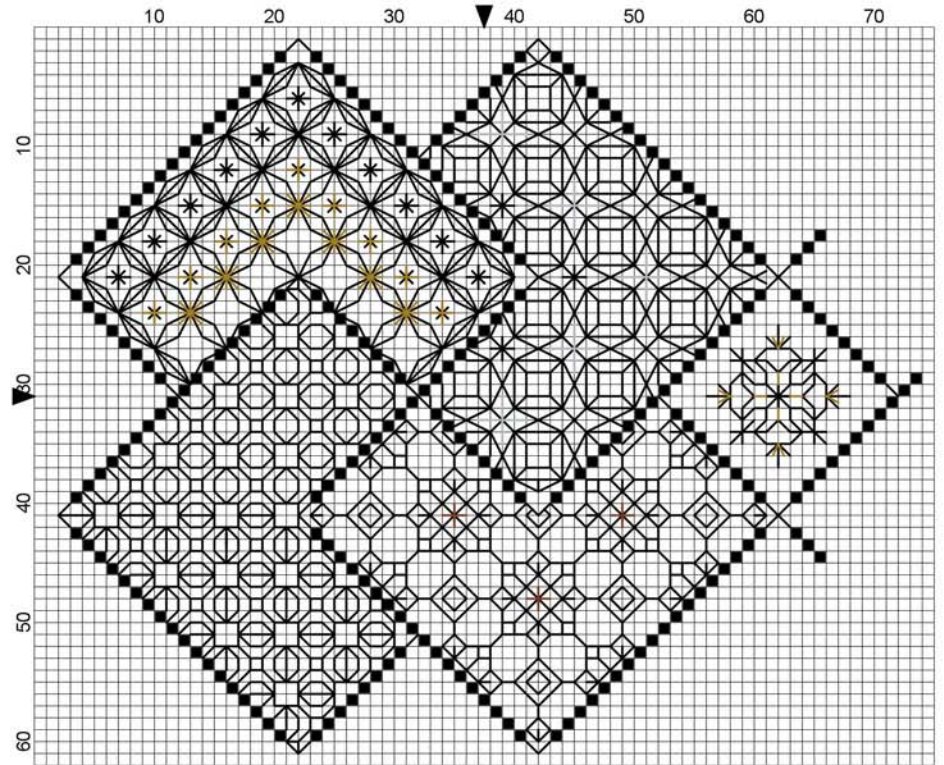


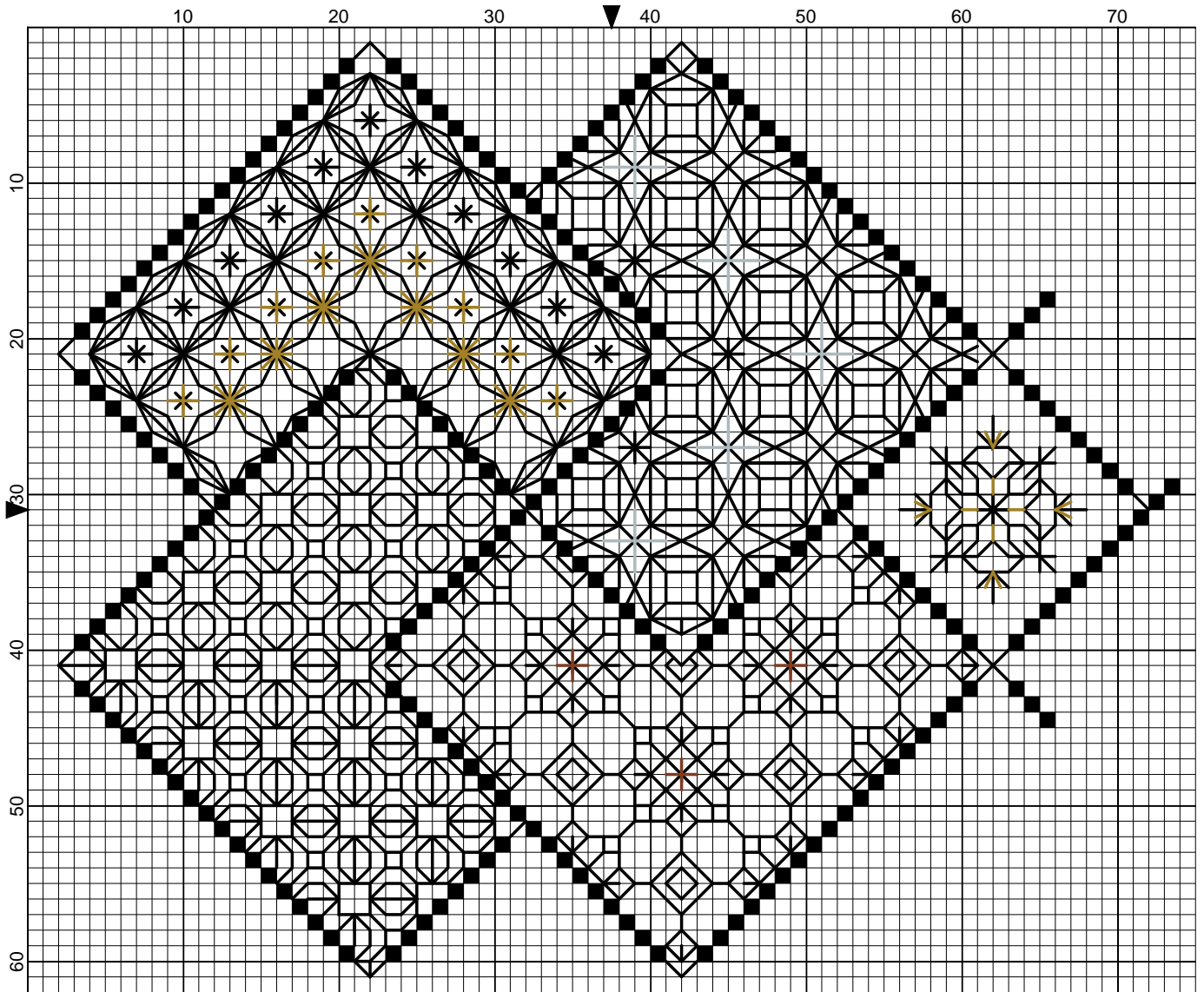
SAVE THE STITCHES

Blackwork Journey - Designs by Elizabeth Almond

Block 9 Patterns 45 - 49



Save the Stitches Block 9 Patterns 45 - 49



Elizabeth Almond

Save the Stitches Block 9 patterns 45 - 49

Author: Elizabeth Almond
Copyright: Elizabeth Almond
Grid Size: 75W x 62H
Design Area: 5.14" x 4.29" (72 x 60 stitches)

Legend:

■ [2] DMC-310 ANC-403 DLE- black

Backstitch Lines:

— DMC-310 black — DLE-E415 Pewter
— DLE-E301 Copper — DLE-E3852 Dark Gold

Block 9 Patterns 45 - 49

Following on from Block 8 insert the next five patterns into the numbered areas.

Stitches:

Cross Stitch

Back Stitch

"Call outs" are metallic cross stitch

Cross stitch is worked in either DMC Cotton Pèrlé, or

DMC 310 Black, TWO strands (Frame - cross stitch)

Diaper filling patterns are worked in ONE strand of DMC 310 unless otherwise stated

