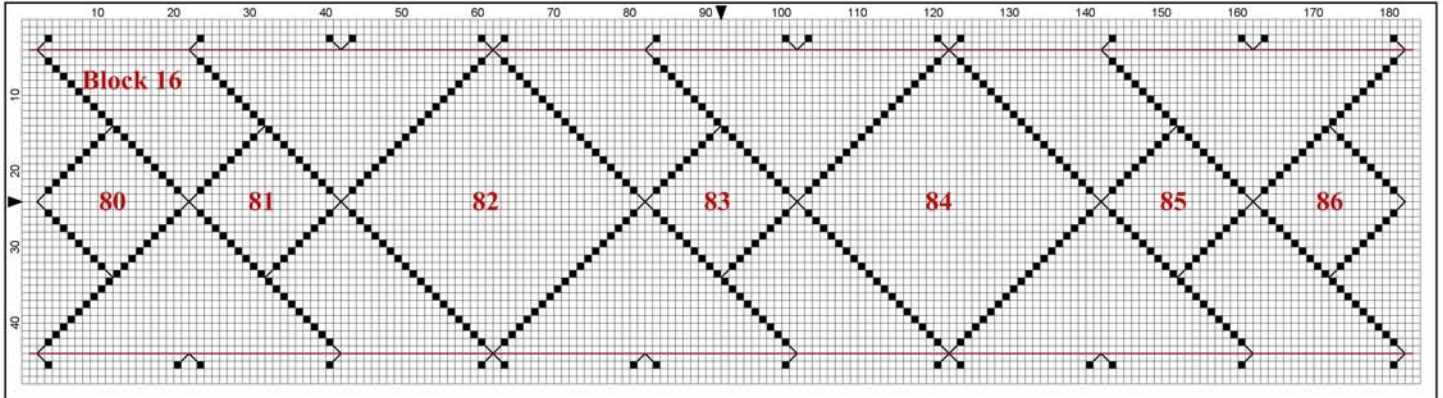


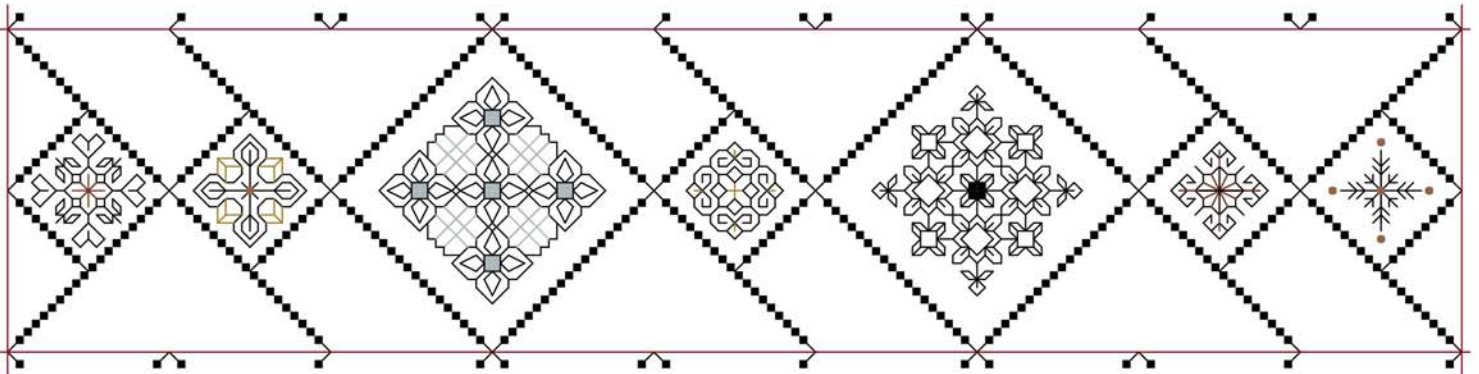
# SAVE THE STITCHES

Blackwork Journey - Designs by Elizabeth Almond

## Block 16 Patterns 80 - 86



Numbered Blocks

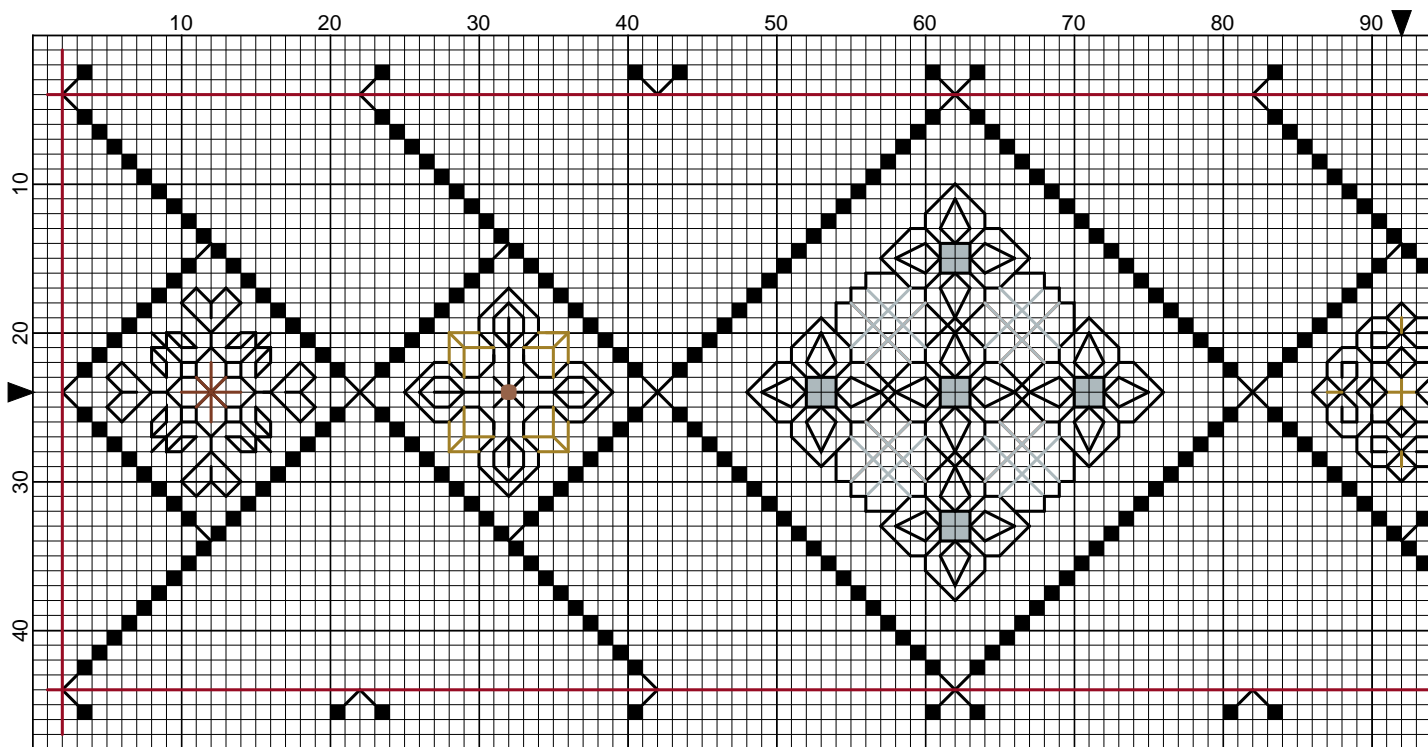


Chart



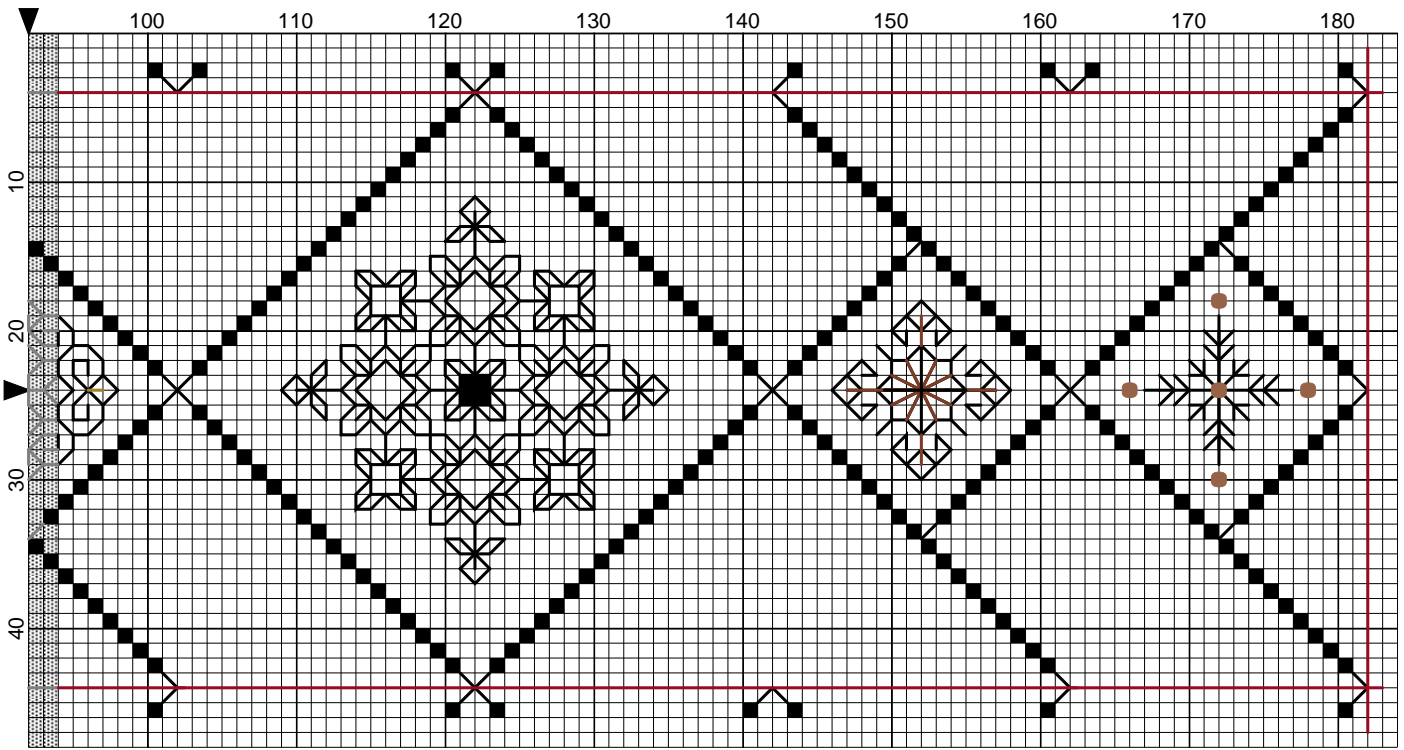
Embroidery

Save the Stitches Block 16 Patterns 80 - 86



Elizabeth Almond

Save the Stitches Block 16 Patterns 80 - 86



Elizabeth Almond

# Save the Stitches Block 16 Patterns 80 - 86

**Author:** Elizabeth Almond  
**Copyright:** Elizabeth Almond  
**Grid Size:** 184W x 48H  
**Design Area:** 13.00" x 3.29" (182 x 46 stitches)

## Legend:

■ [2] DMC-310 ANC-403 DLE- black

## Call Outs:

■ [2] DLE-E415 Pewter DMC Light Effects

## Backstitch Lines:

— DMC-310 black — DLE-E3852 Dark Gold — DLE-E301 Copper  
— DMC-816 garnet — DLE-E415 Pewter

## Beads:

● MHG-557 Mill Hill Glass Beads-Gold

Block 16 Patterns 80 - 86

Following on from Block 15 insert the next seven patterns into the numbered areas.

## Stitches:

Cross Stitch

Back Stitch

"Call outs" are metallic cross stitch

Cross stitch is worked in either DMC Cotton Pèrlé, or

DMC 310 Black, TWO strands (Frame - cross stitch)

Diaper filling patterns are worked in ONE strand of DMC 310 unless otherwise stated

