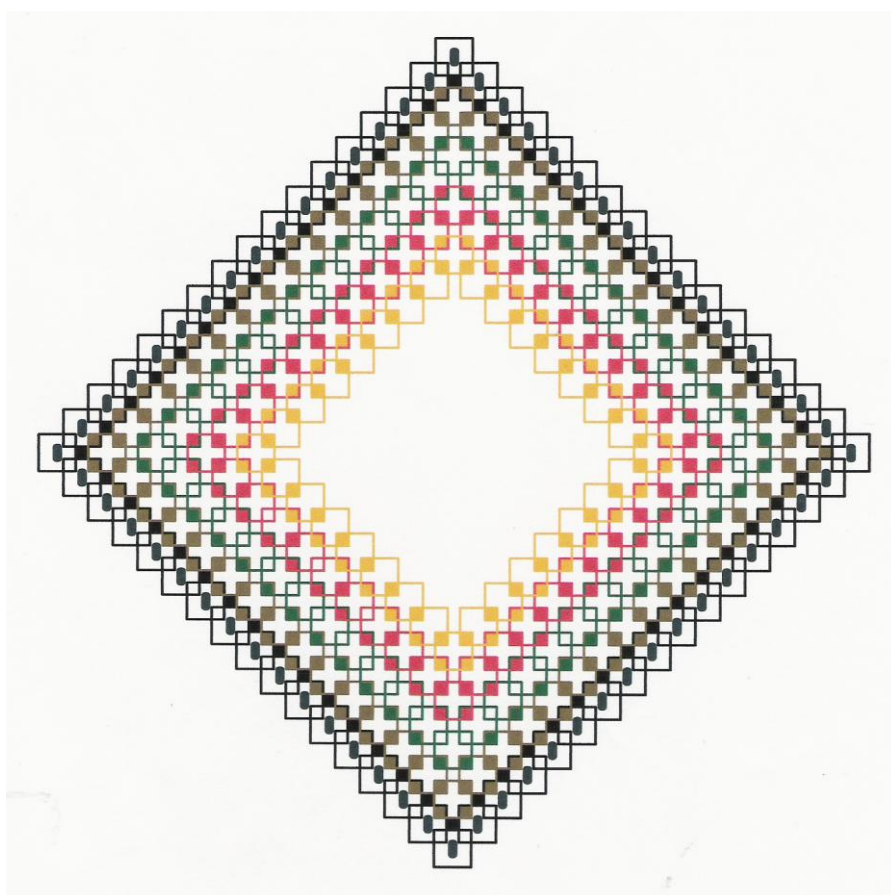
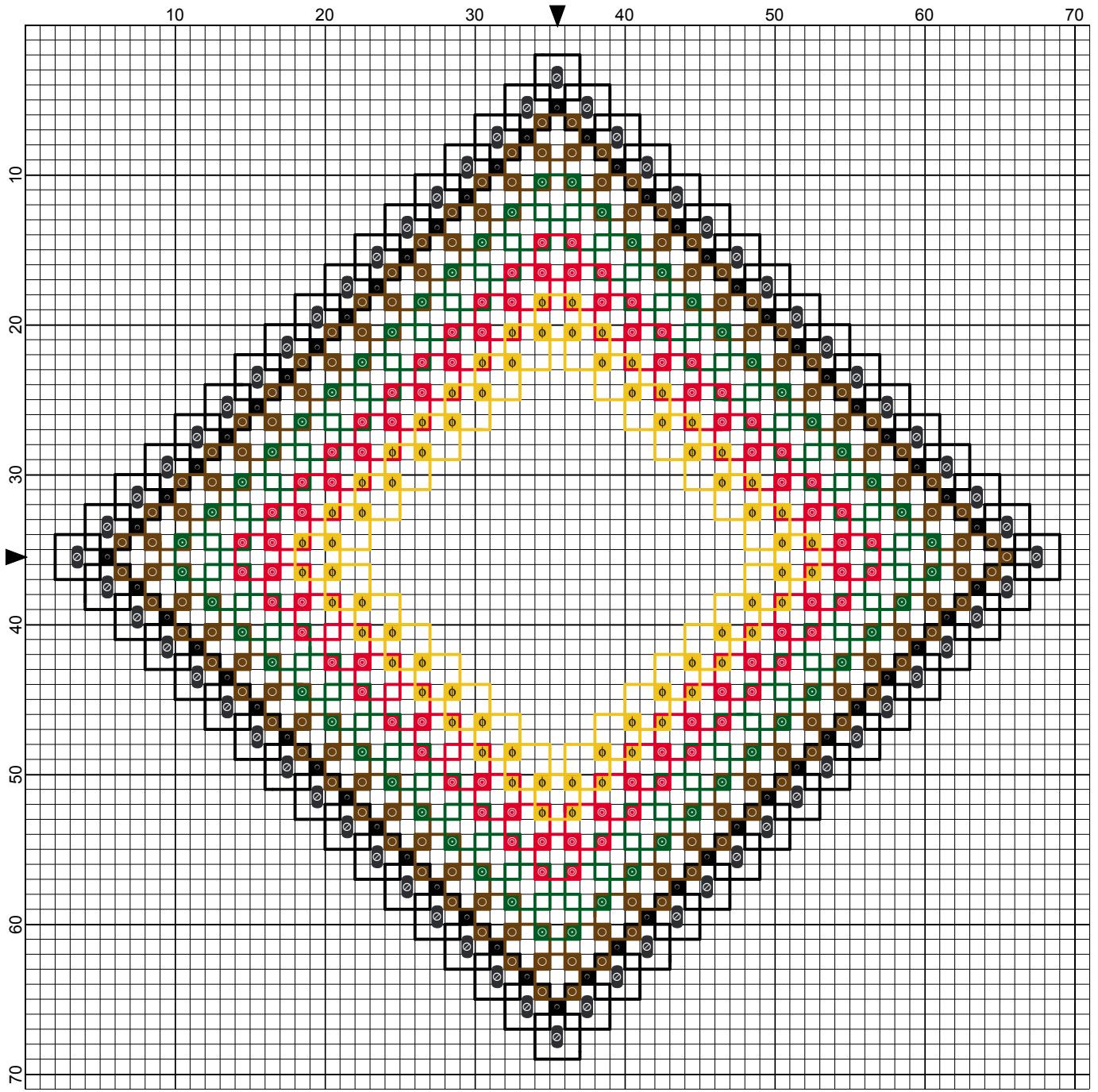


COLOUR LACE

DESIGNS BY ELIZABETH ALMOND



Colour Lace



Elizabeth Almond






Colour Lace

Author: Elizabeth Almond
Copyright: Elizabeth Almond
Grid Size: 71W x 71H
Design Area: 4.79" x 4.79" (67 x 67 stitches)

Legend:

	[2]	DMC-310	ANC-403	black		[2]	DMC-666	ANC-46	christmas red - br
	[2]	DMC-801	ANC-359	coffee brown - dk		[2]	DMC-728	ANC-306	golden yellow
	[2]	DMC-699	ANC-923	christmas green					

Backstitch Lines:

	DMC-310	black		DMC-699	christmas green		DMC-728	golden yellow
	DMC-801	coffee brown - dk		DMC-666	christmas red - br			

Beads:

 MHG-81 Mill Hill Glass Beads-Jet

Colour Lace

14 count Aida 8" x8"

DMC stranded cotton in five shades

Tapestry needle No 24

Beading needle

Mill Hill Glass Beads No 81 Jet

Black sewing cotton

Stitches used:

Back stitch

Cross stitch

Method:

Select five different shades of DMC stranded cotton. Using one strand for back stitch and two strands for cross stitch. Work from the centre outwards. Start with the lightest shade working towards the final row of black squares.
Add the beads after the embroidery has been completed.