

PURPLE PIECE

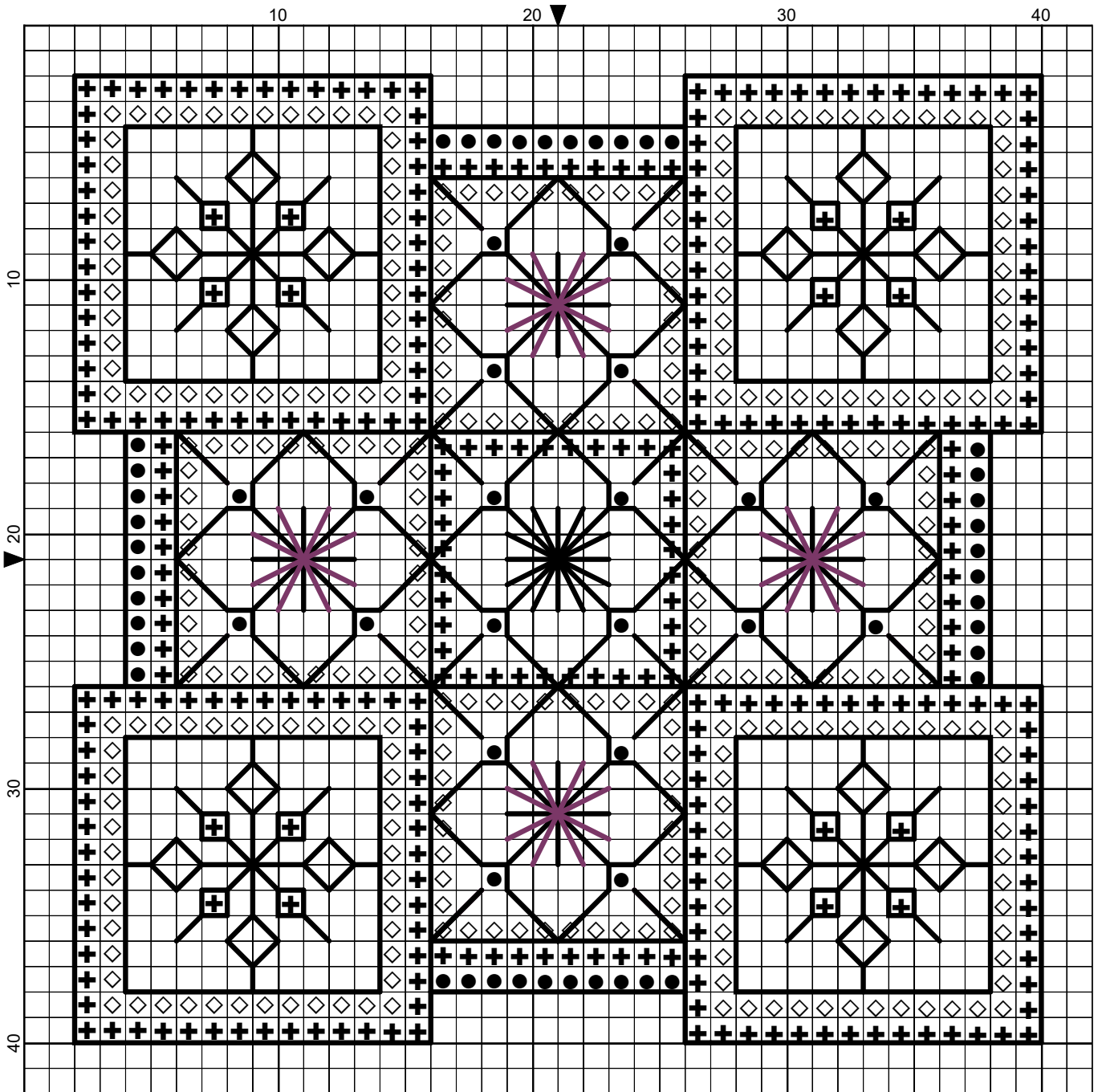
Blackwork Journey – Designs by Elizabeth Almond



Stitch a simple blackwork and cross stitch sampler!

www.blackworkjourney.co.uk

Purple Piece




Elizabeth Almond, Licensed to:

- Legend:
- ■ DMC-310 ⊕ DMC-552 ◊ DMC-554
- Backstitches:
- DMC-310 — DMC-552

Purple Piece

Author: Elizabeth Almond
Copyright: Elizabeth Almond
Grid Size: 42W x 42H
Design Area: 2.71" x 2.71" (38 x 38 stitches)

Legend:

 [2] DMC-310 ANC-403 DLE- Black  [2] DMC-554 ANC-97 DLE- Pastel violet
 [2] DMC-552 ANC-92 DLE- Violet

Backstitch Lines:

 DMC-310 Black  DMC-552 Violet

Limiting the number of colours can create an attractive design. The emphasis is on the stitching, with Algerian eyelets introduced into five of the squares.

When working cross stitch make certain that the top stitch ALWAYS lays in the same direction. Write top and bottom on your piece of material if you are not certain which way you are holding your material.

Material:

Zweigart 28 count evenweave or 14 count Aida
6 x 6 inches

Threads:

DMC stranded cotton
310 Black, one skein
552 Violet, one skein
554 Pastel violet, one skein
Tapestry needle No.24

Stitches used:

Algerian eyelet, one strand. Work the 16 stitches from the outside into the centre using one strand of cotton.
Back stitch, one strands
Cross stitch, two strands

Method:

1. Fold the fabric into four quarters and find the centre point.
2. Start from the central Algerian eyelet and work outwards using ONE strand for the eyelets and blackwork and TWO strands for the cross stitch. Outline the squares with black after you have completed the cross stitch for a neater finish.
3. Place the finished embroidery face down on a soft towel and press lightly. Make up into a card. If two pieces are embroidered the design could be made into a pincushion or a scented sachet.

I hope you enjoy stitching this little design. If you have any queries please contact:

lizalmond@blackworkjourney.co.uk