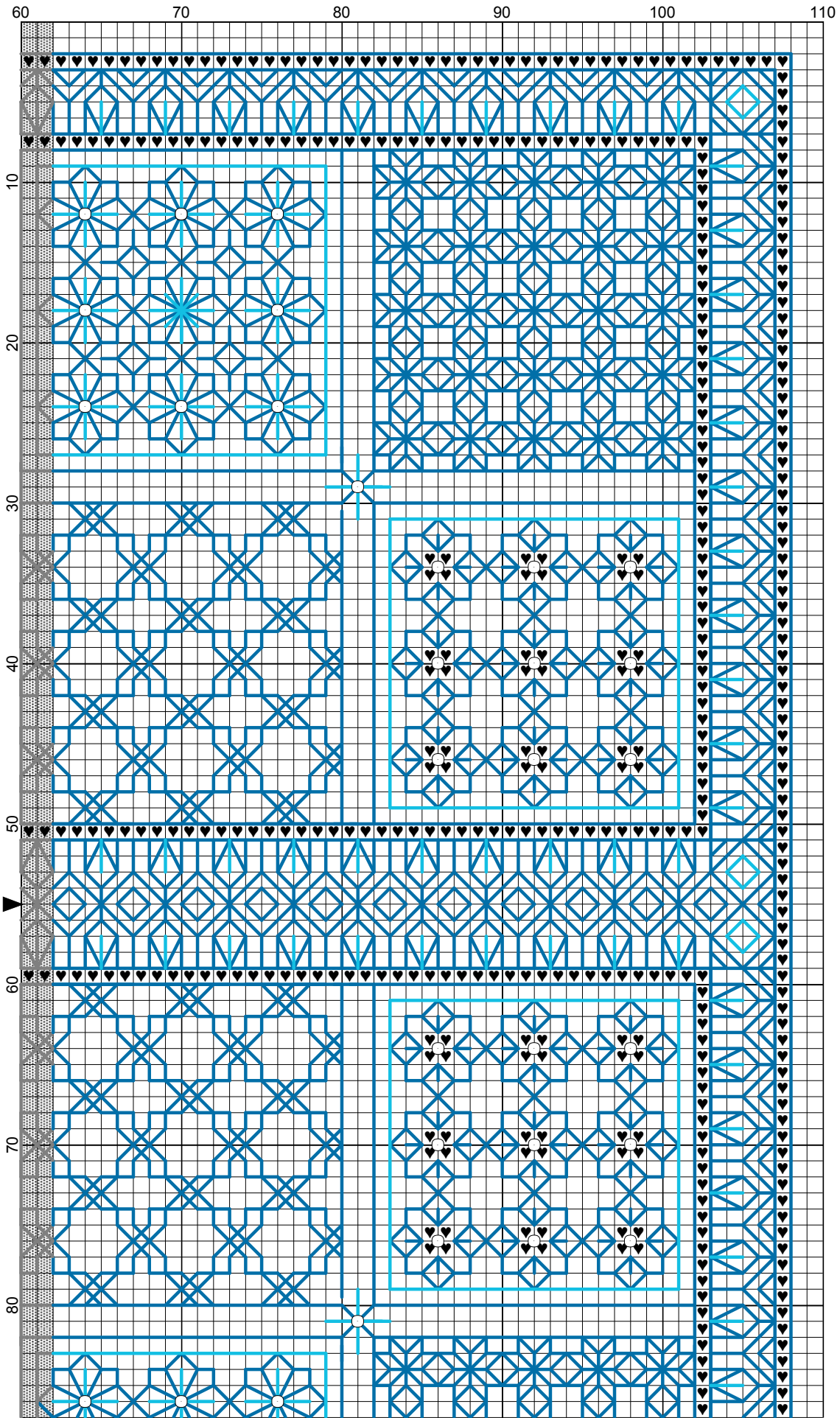


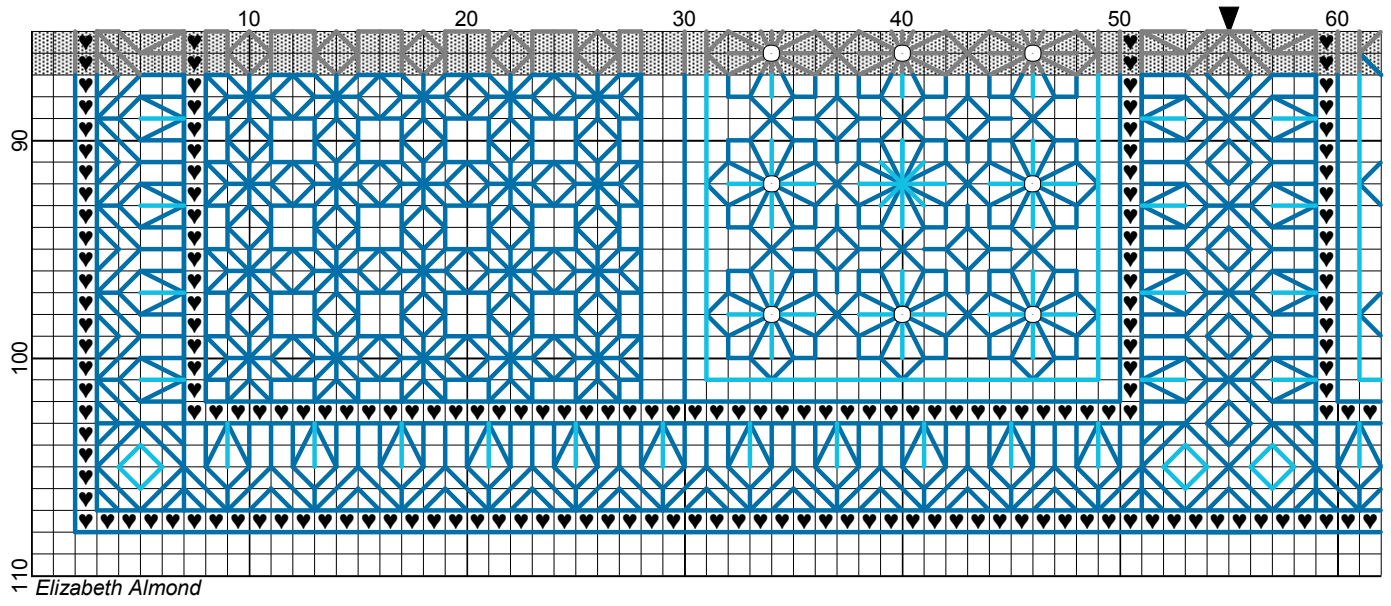
New Itznik



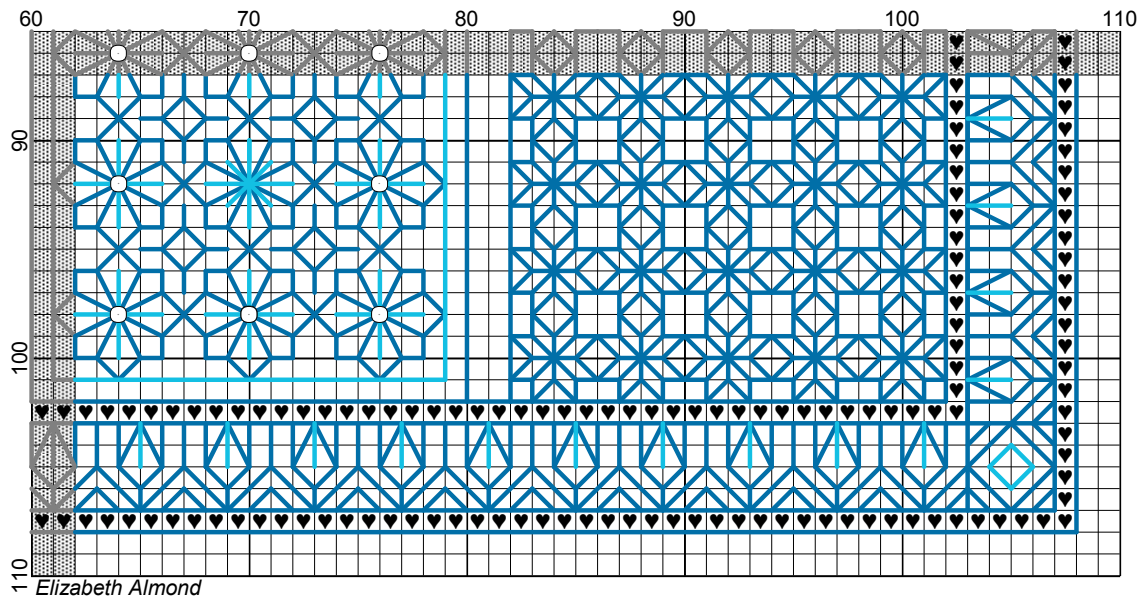
- Legend:
- ◼ DMC-996
 - ◼ DMC-995
 - DMC-996
 - MHG-2011
- Backstitches:
- DMC-995
 - DMC-996
- Beads:
- MHG-2011

Elizabeth Almond

New Itznik



New Itznik



New Itznik

Author: Elizabeth Almond
Copyright: Elizabeth Almond
Grid Size: 110W x 110H
Design Area: 7.57" x 7.57" (106 x 106 stitches)

Legend:

 [2] DMC-996 ANC-433 electric blue - md

Backstitch Lines:

 DMC-995 electric blue - dk  DMC-996 electric blue - md

Beads:

○ MHG-2011 Mill Hill Glass Beads-Victorian Gold

Iznik tiles are commonly found in old buildings in Turkey where their bright blue panels make a splash of colour in sunlit surroundings. Create your own tile using simple blackwork stitches in blue, or change the colours to suit your surroundings.

Material:
28 count evenweave or 14 count Aida, 13 x 13 inches

Threads:
DMC stranded cotton:
995 Electric blue - dark, one skein
996 Electric blue - medium, one skein

Mill Hill glass beads 2011 Victorian gold, one packet

Tapestry Needle No.24
Beading needle

Stitches used:
Back stitch
Cross stitch

Method:
Start from the centre of the design, working outwards using ONE strand of cotton for the back stitch and TWO strands for the cross stitch. Back stitch round the cross stitch to create a neater finish to the embroidery. Add the beads after all the embroidery has been worked.

I hope you enjoy stitching my tile as much as I have enjoyed designing it.

If you have any queries please contact:

lizalmond@blackworkjourney.co.uk