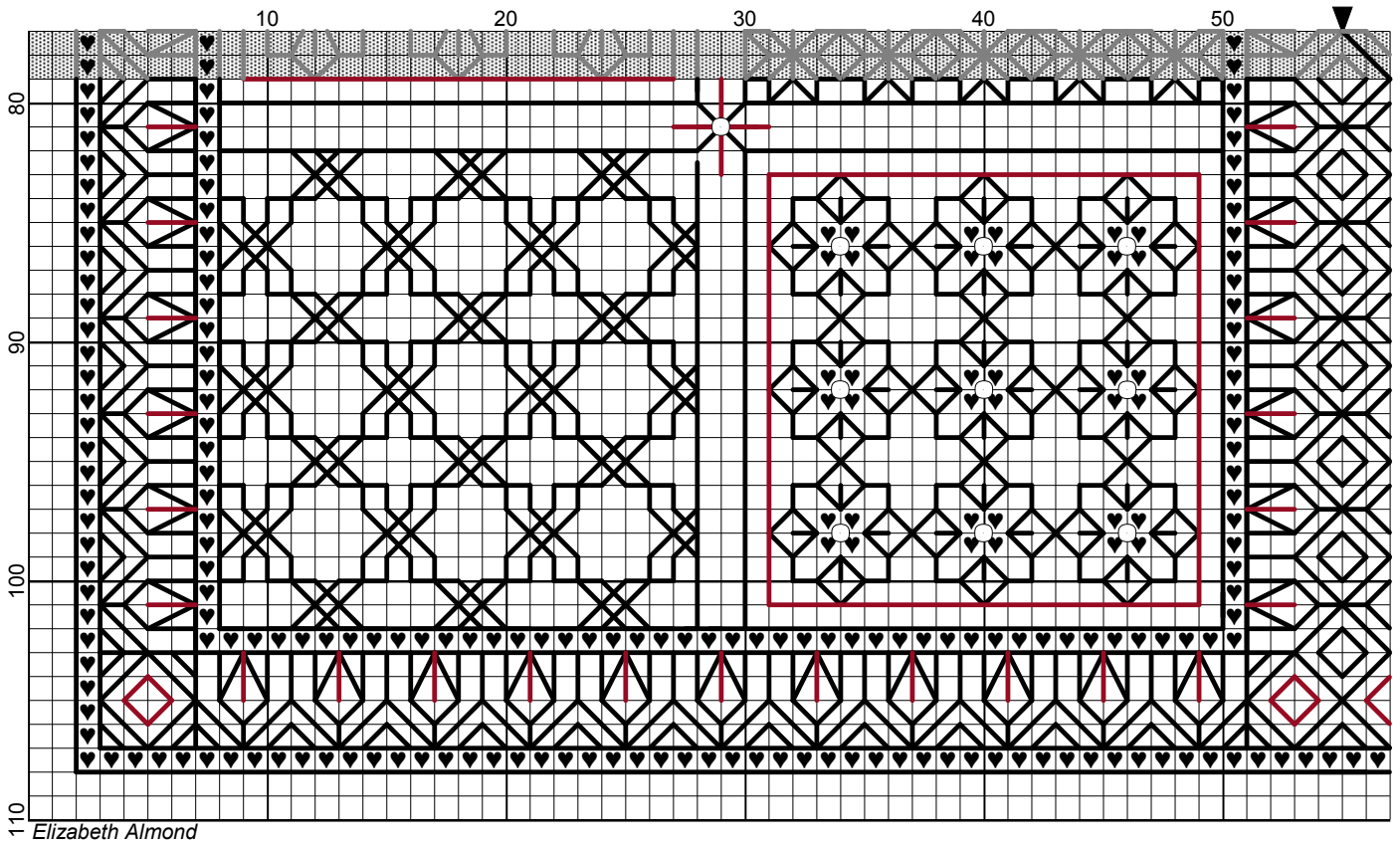
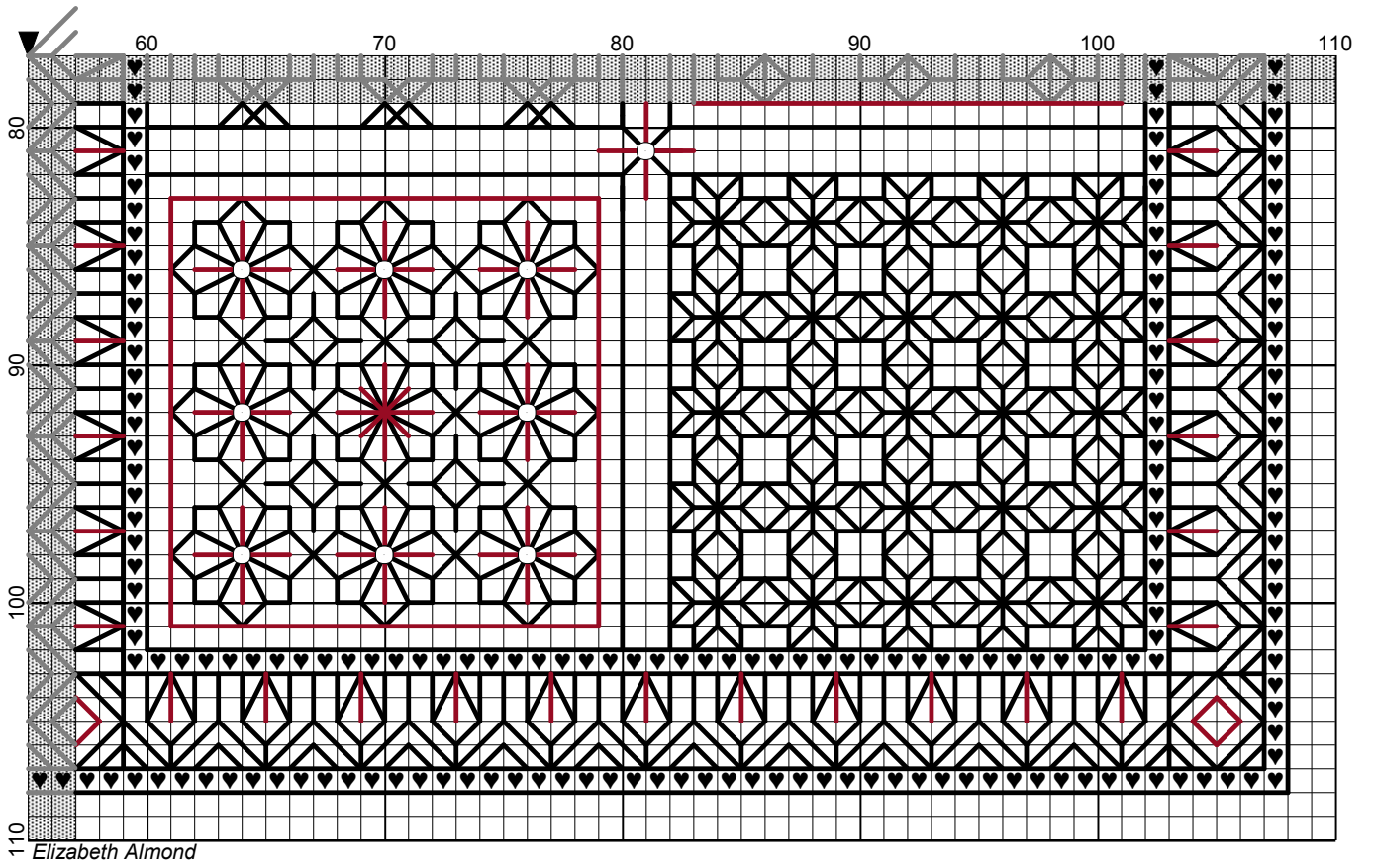


Elizabeth Almond

Itnzik Variations




Itnznik Variations



Itznik Variations

Author: Elizabeth Almond
Copyright: Elizabeth Almond
Grid Size: 110W x 110H
Design Area: 7.57" x 7.57" (106 x 106 stitches)

Legend:

 [2] DMC-816 ANC-1005 garnet  [2] DMC-310 ANC-403 black

Backstitch Lines:

 DMC-816 garnet  DMC-310 black

Beads:

○ MHG-2022 Mill Hill Glass Beads-Silver

Itznik tiles are commonly found in old buildings in Turkey where their bright blue panels make a splash of colour in sunlit surroundings. Create your own tile using simple blackwork stitches in blue, or change the colours to suit your surroundings.

Material:

28 count evenweave or 14 count Aida, 13 x 13 inches

Threads:

DMC stranded cotton:
310 black, one skein
816 Garnet, one skein

Mill Hill glass beads 2022 Silver, one packet

Tapestry Needle No.24

Beading needle

Stitches used:

Back stitch
Cross stitch

Method:

Start from the centre of the design, working outwards using ONE strand of cotton for the back stitch and TWO strands for the cross stitch. Back stitch round the cross stitch to create a neater finish to the embroidery. Add the beads after all the embroidery has been worked.

I hope you enjoy stitching my tile as much as I have enjoyed designing it.

If you have any queries please contact:

lizalmond@blackworkjourney.co.uk