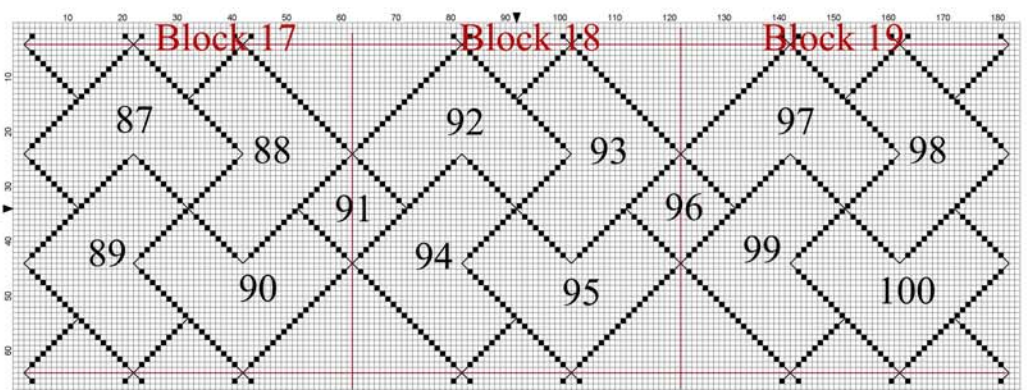
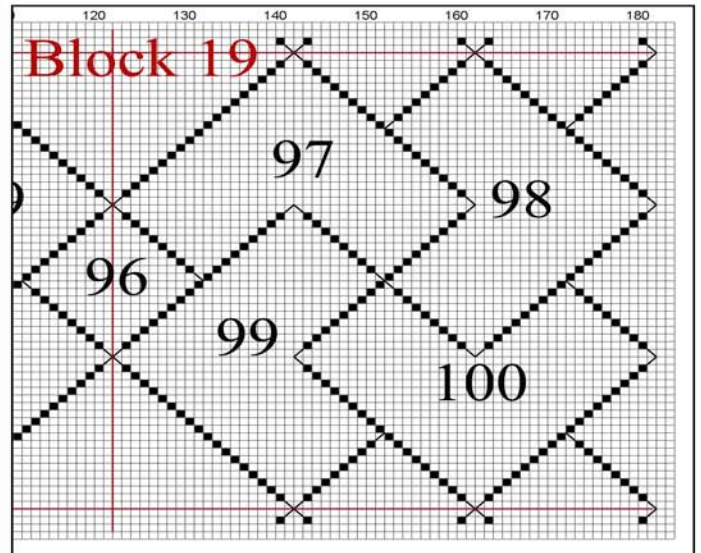


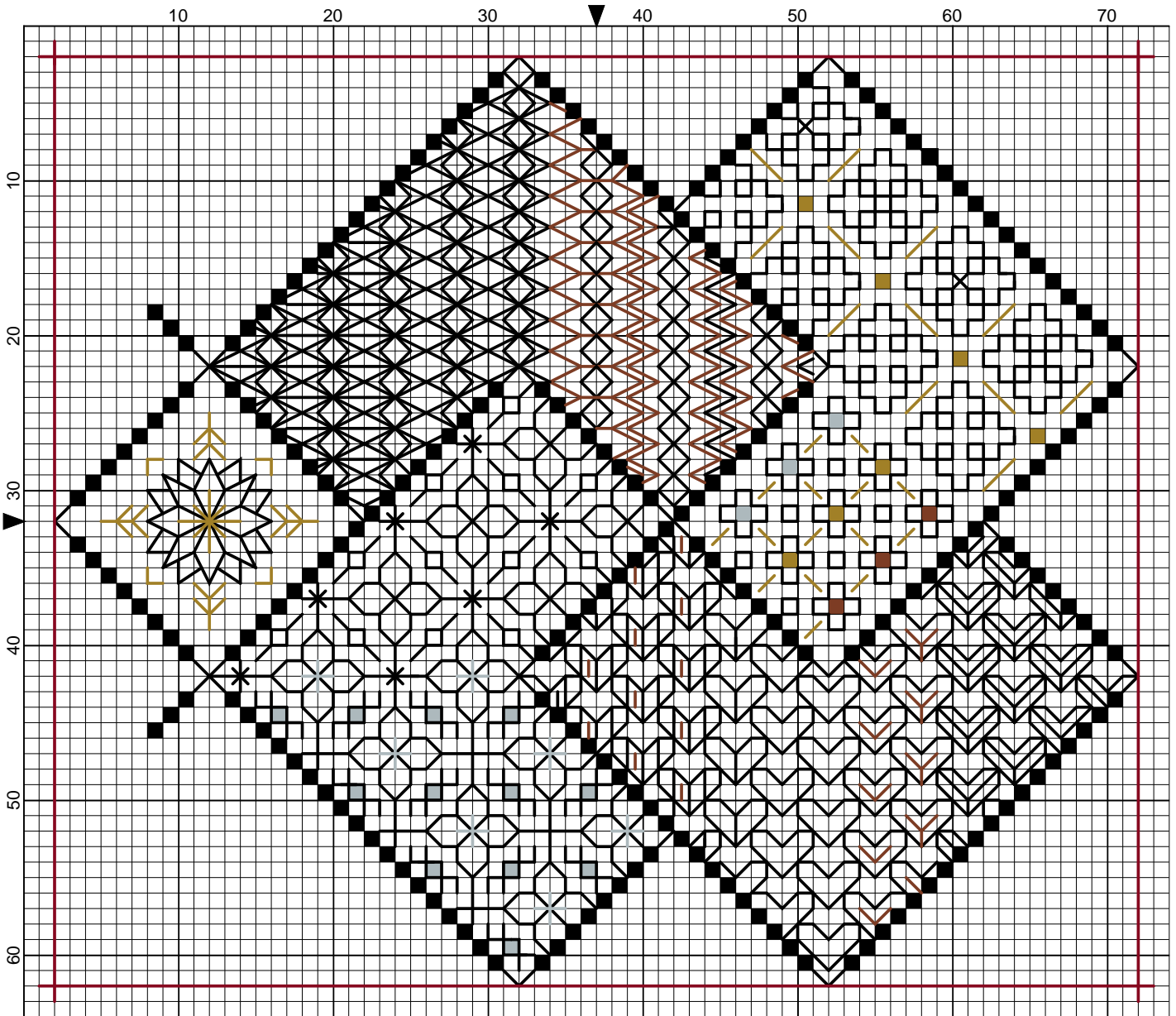
SAVE THE STITCHES

Blackwork Journey - Designs by Elizabeth Almond

Block 19 Patterns 96 - 100



Save the Stitches Block 19 Patterns 96 - 100



Elizabeth Almond

Save The Stitches Block 19 Patterns 96 - 100

Author: Elizabeth Almond
Copyright: Elizabeth Almond
Grid Size: 74W x 64H
Design Area: 5.14" x 4.43" (72 x 62 stitches)

Legend:

■ [2] DMC-310 ANC-403 DLE- black

Call Outs:

■ [2] DLE-E301 Copper DMC Light Effects

■ [2] DLE-E415 Pewter DMC Light Effects

■ [2] DLE-E3852 Dark Gold DMC Light Effects

Backstitch Lines:

— DMC-310 black

— DLE-E3852 Dark Gold

— DMC-815 garnet - md

— DLE-E301 Copper

— DLE-E415 Pewter

Block 19 Patterns 96 - 100

Following on from Block 18 insert the next five patterns into the numbered areas.

Stitches:

Cross Stitch

Back Stitch

"Call outs" are metallic cross stitch

Cross stitch is worked in either DMC Cotton Pèrlé, or

DMC 310 Black, TWO strands (Frame - cross stitch)

Diaper filling patterns are worked in ONE strand of DMC 310 unless otherwise stated.

