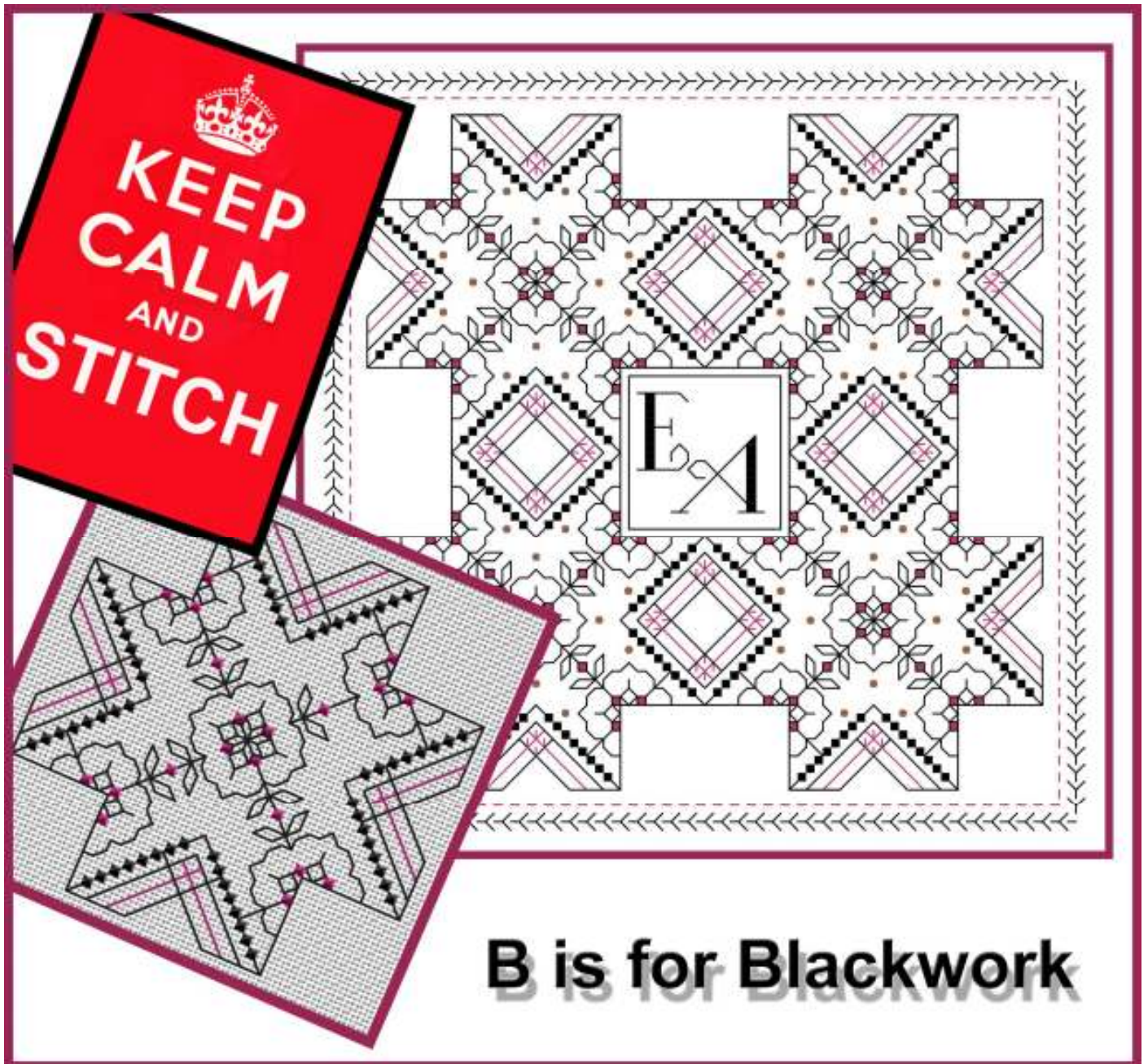
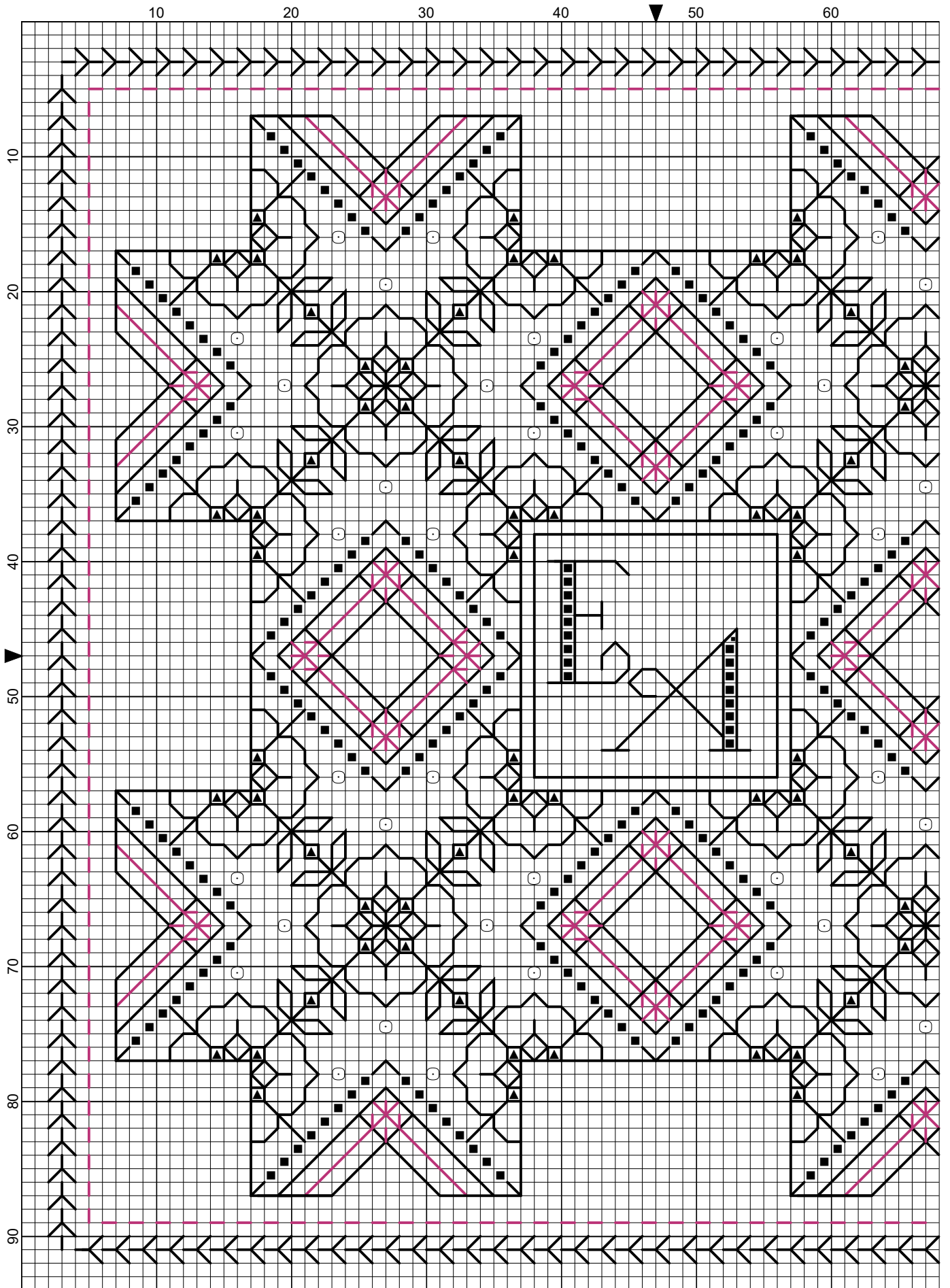


MINI MOTIF 2 B IS FOR BLACKWORK
Blackwork Journey – Designs by Elizabeth Almond



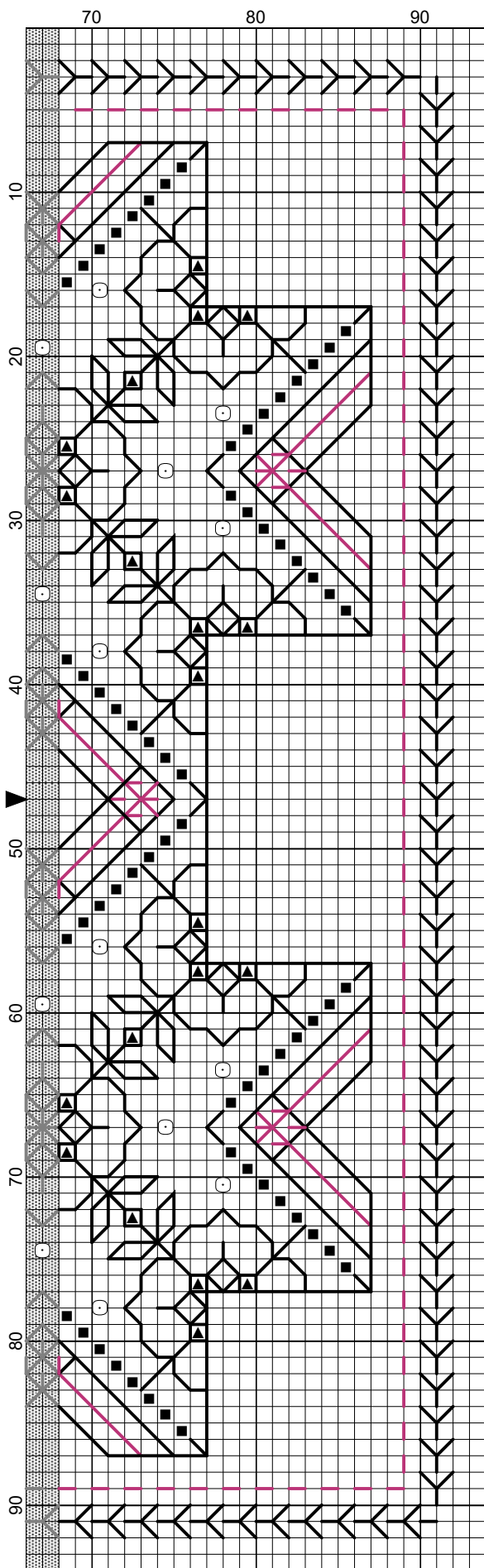
Work a single motif or a small blackwork sampler on evenweave or Aida fabric just for fun!

Mini Project 2 B is for Blackwork



Elizabeth Almond

Mini Project 2 B is for Blackwork



- Legend:
- DMC-310
 - ▲ DMC-718
 - MHG-557
- Backstitches:
- DMC-310
 - DMC-718
- Beads:
- MHG-557

Elizabeth Almond

Mini Project 2 B is for Blackwork

Author: Elizabeth Almond
Copyright: Elizabeth Almond
Grid Size: 94W x 94H
Design Area: 6.43" x 6.43" (90 x 90 stitches)

Legend:

■ [2] DMC-310 ANC-403 black ▲ [2] DMC-718 ANC-89 plum

Backstitch Lines:

— DMC-310 black — DMC-718 plum

Beads:

○ MHG-557 Mill Hill Glass Beads-Gold

Mini Project 2 B is for Blackwork

This is the second in the Keep Calm and Stitch series. Work one small motif for a gift card or a small blackwork sampler.

Use materials, threads and beads from your stash.

Material: Zweigart 28 count evenweave, or 14 count Aida 10 x 10 inches

Stitches used:

Back stitch, one strand

Cross stitch, two strands

Fly stitch, one strand

Note: Cross stitch is worked in TWO strands over two threads or one block, back stitch is worked in ONE strand over two threads or one block unless the pattern instructions state otherwise.

Method:

1. Work the centre two squares in back stitch using one strand. If you want to add a motif or initials this is done after the embroidery is completed.
2. Work outwards round the central squares adding the flowers and diamonds.
3. Once the central pattern has been completed add a running stitch and fly stitch border to complete the design.
4. Add the beads after the embroidery has been completed.
5. Place the finished work face down on a soft towel and press lightly.

I hope you enjoy working this design as much as I have enjoyed creating it.

If you have any queries please contact:
lizalmond1@blackworkjourney.co.uk